

ES-78

MM PHONO CARTRIDGE

Thank you for your purchase of the ES-78 stereo cartridge.
Read these Operating Instructions carefully before using your ES-78 and keep it for future reference.

BEFORE USING

1. The Stylus is very delicate. Applying excessive force to the stylus, such as pressing with a finger can break it. Handle the cartridge with the utmost care.
2. A powerful magnet is used in the cartridge. Note that carelessly bringing a steel screwdriver or other such item near the cartridge will result in it being attracted by the magnet and may result in damage to the stylus, so care must be taken.

PACKAGE CONTENT

- Cartridge body
- Aluminium sets of head-shell fixing 2,5mm screws and bolts
- Owner's Manual

METHOD OF USE

Mounting the cartridge on the tone arm Head-Shell using the supplied Allen Wrench and one set of the 2,5mm screws. Adjust it to the stylus position specified for the turntable system you are using mounting it properly without tilting or turning it. (See Figure 1.)

The output terminals are colours coded for identification as illustrated in Figure 2. Match the colors of the tone arm head-shell leads to the terminals and connect each other properly.

NOTE:

When connecting the cartridge, be sure to use the tipped leads and press them onto the terminals. Applying heat to the output terminals of the cartridge, such as in direct soldering, will cause internal damage to the cartridge, such as wire breakage.

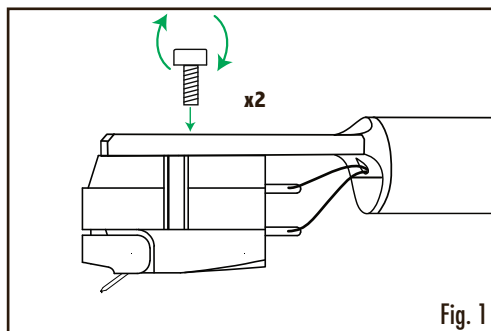


Fig. 1

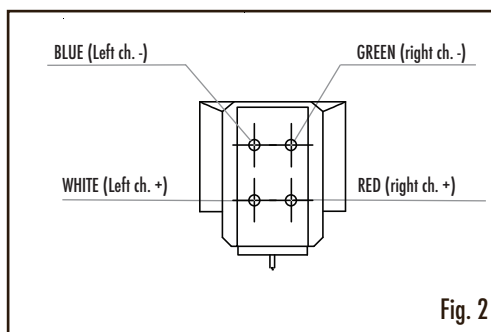


Fig. 2

With its computer shape design achieving top audio performance, ES-78 combines convenience and performance the best.

Its high dampening body firmly block the cartridge; its ultra-rigid cantilever in aluminium features a custom conical diamond tip, exclusively developed for Gold Note.

To let you enjoy even the finest sound details, the cantilever is securely and directly installed into the metal body to enhance structural rigidity for top trackability, so that you can experience the greatest and largest bandwidth response.

SPECIFICATIONS

Typology: MM Phono Cartridge

Output level: 4mV

Frequency response: 15 - 25000Hz

Impedance: 1000 Ω

Suggested load: 47K Ω

Inductance: 500mH

Compliance: 10 \times 10-6cm/dyne

Channel separation: >20dB

Channel balance: <2dB

Suggested tracking weight: 2g

Cantilever: Aluminum

Diamond: Conical

Diamond size: 7.5*15.5 μ m

Coil Wire: Copper

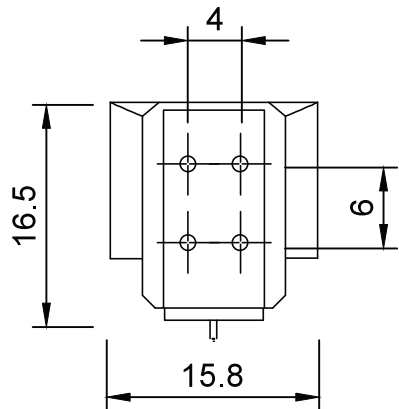
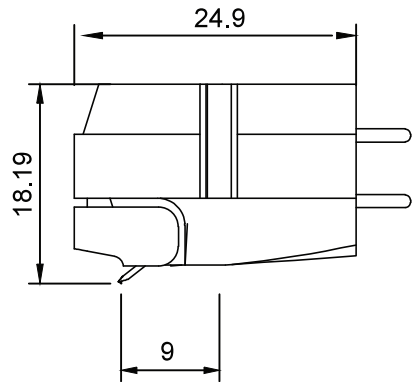
Magnet: Alnico

Mounting hole diamond distance: 9mm

Total weight: 6g

Body: POM

Finishes: black





 [goldnote_italy](#)

 [Gold Note Audio](#)

 [Gold Note](#)

Akamai S.r.l.
service@goldnote.it
www.goldnote.it