

TP101 A30
USER MANUAL

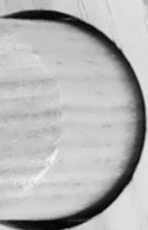
ON

TUNER

AUX

CD DVD

TAPE





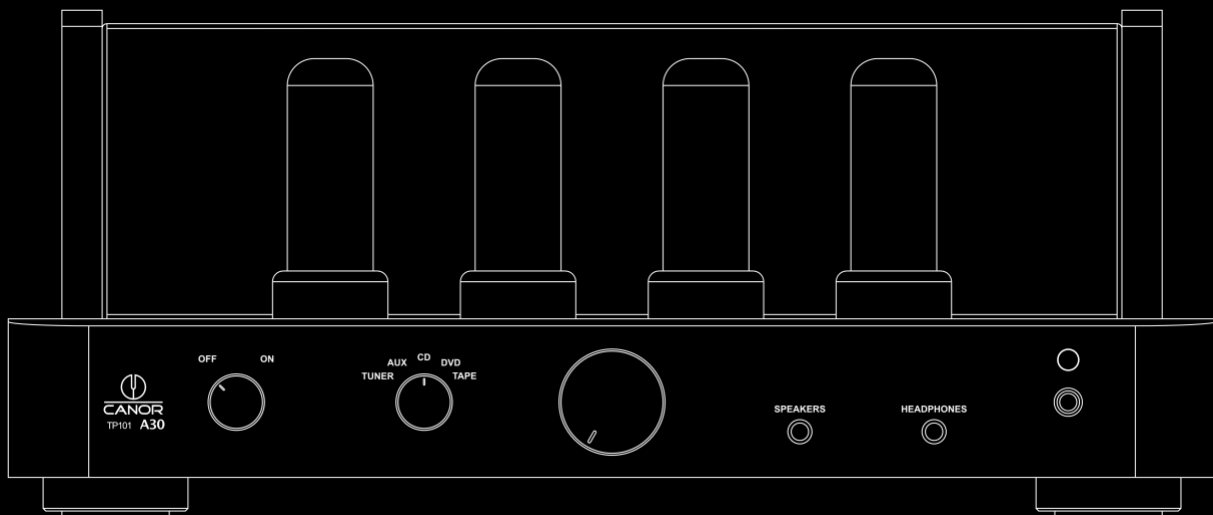
CANOR, spol. s r.o., Družstevna 39, 080 06 Presov, Slovakia

www.canor-audio.com
sales@canor-audio.com
+ 421 51 7710 396



CANOR TP101 A30
Integrated Tube Amplifier

User Manual



Dear Music Lover,
thank you for purchasing our CANOR TP101 A30 Integrated Tube Amplifier, which pays tribute to Canor's very first tube amplifier built three decades ago. To preserve and maintain the best characteristics of your TP101 A30, we recommend you carefully read the following lines.

SAFETY INSTRUCTIONS

Please read before putting the device into operation.

1. Read the instructions – all safety information and instructions should be read before using the amplifier.
2. Keep the user manual – the safety and user instructions manual should be stored for possible later use.
3. Follow the instructions – all safety and user instructions should be followed.
4. Water and moisture – the TP101 A30 amplifier should not be placed near water, for example, near bathtubs, swimming pools, kitchen sinks, etc...
5. Accessories – do not use accessories not recommended by the manufacturer.
6. Placement – do not place a device on an unstable pad. The device may fall, which can cause serious injuries to children or adults, as well as damage to the device. Use only pads or racks recommended by the manufacturer or pads sold to dealers with this device. Any placement of the device should be in accordance with the manufacturer's instructions, and only accessories recommended by the manufacturer should be used.
7. Ventilation – the unit should be placed the way to ensure proper airflow. That means it is not allowed to place the amplifier on a sofa or on upholstered furniture. The amplifier may not be covered over when in operation; it would otherwise prevent proper airflow around the vent holes of the amplifier.
8. Heat – amplifier must be placed to avoid the heating effect from heat sources, for example, radiators or stoves, or other heat-producing equipment. The distance from the back wall of the unit may not be less than 20 cm, and 20 cm above the area of TP101 A30 may not be any barrier. Alongside the unit should be ensured 20 cm minimum distance from other objects.
9. Power source – the device must be connected only to a main supply for what it is designed for.
10. Power cord – it is necessary to pay particular attention to the power cord, it must be positioned to avoid setting foot on it and ensure it is protected against mechanical damage.
11. If you do not use the amplifier for a longer period – you should disconnect the power cord from the mains supply.
12. Objects containing liquid – do not place these objects (vases, flowerpots), so that they can fall on the amplifier and, eventually, prevent the liquid from leaking out on the amplifier.
13. Damages requiring service – equipment should be repaired only by a qualified service if:
 - a. The power cord is damaged.
 - b. The device dropped into the water or was poured.
 - c. The device was exposed to rain.
 - d. The device works incorrectly.
 - e. The device fell on the ground or is otherwise mechanically damaged.
14. Repairs – all repairs must be entrusted to a qualified service.
15. General warning – use the device only in accordance with this user guide.

The manufacturer declines any liability should these safety measures not be observed. To help you avoid an electric shock, do not expose the amplifier to rain or moisture!

DELIVERY CONTENT

- Shipping packaging
- CANOR TP101 A30 Integrated Tube Amplifier
- Remote control (2 x AAA battery required)
- Power cord
- Textile gloves
- CANOR TP101 A30 User Manual
- Protective glass cover
- Cover Glass Installation Thumb Screw Kit
- Set of four measured and paired EL34 tubes
- Set of four precisely selected ECC81 tubes

FRONT PANEL

- **ON / OFF SWITCH** – Turning on and off the amplifier.
- **INPUT SELECTOR** – Selecting between five inputs.
- **VOLUME KNOB** – Amplifier volume control knob.
- **SPEAKERS BUTTON** – Pressing to mute the speakers
- **HEADPHONES BUTTON** – Pressing to mute the headphone output
- **HEADPHONE JACK OUTPUT** – 6,3mm jack connector

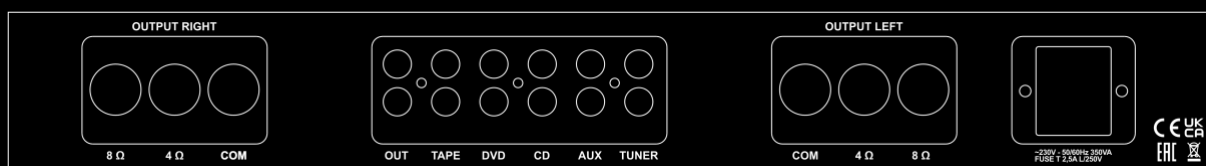
HEADPHONE AMPLIFIER / HEADPHONE OUTPUT

The front panel of the TP101 A30 features an unbalanced headphone output via a 6.3mm audio jack.

The headphone output is constantly activated. To use the 6.3 mm audio jack output, simply plug in your headphones and start your listening session.

BACK PANEL

- **LEFT / RIGHT SPEAKER OUTPUTS** – Dedicated to both 4- and 8-Ohm loudspeakers
- **TAPE, DVD, CD, AUX, TUNER ANALOG INPUTS** – Left / Right RCA inputs
- **FIX OUT ANALOG OUTPUT** – Left / Right RCA output
- **POWER** – Mains power inlet with mains fuse.



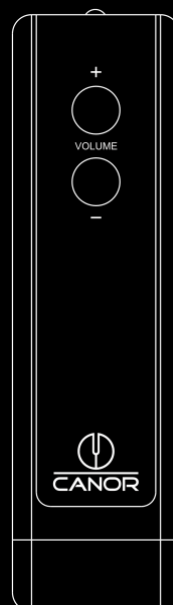
REMOTE CONTROL

Do not expose the sensors of your remote control to direct sunlight or to other strong light sources. Remote control operates at an angle of 60 ° to about 5 meters. Aim your remote control at the sensor on the device. There may not be any obstacles in the way between the sensor and the remote control. If the appliance is placed behind glass, it may result in shortening the operating distance of a remote control (according to the colour and strength of the glass).

The remote control is compatible with your amplifier TP101 A30.

Amplifier / Preamp features

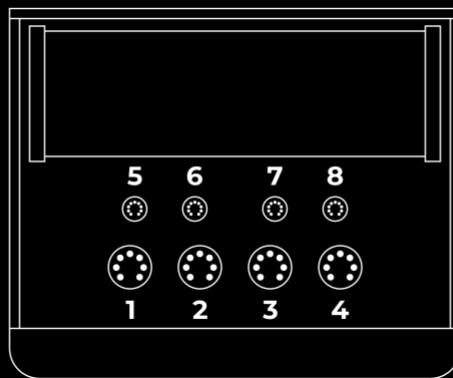
- **VOLUME -** – Volume down control button.
- **VOLUME +** – Volume up control button.



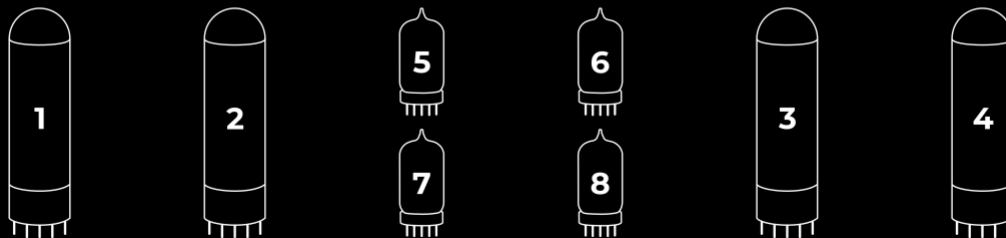
TUBE INSTALLATION GUIDE

This tube installation guide is intended for the initial installation of vacuum tubes in your new TP101 A30. Always install the tubes with the unit switched off and completely disconnected from the mains power supply. Each tube has a specific designated position in the TP101 A30 and must be installed only in its assigned socket. The tubes are supplied separately and stored in the product packaging. Please carefully follow the tube installation diagram to avoid potential damage to the amplifier or degradation of its sonic performance.

The TP101 A30 is supplied with a factory-selected and matched set of vacuum tubes to ensure correct operation and optimal sonic performance.



Install vacuum tubes in the proper tube sockets.



BASIC FUNCTIONS OF REPRODUCTION

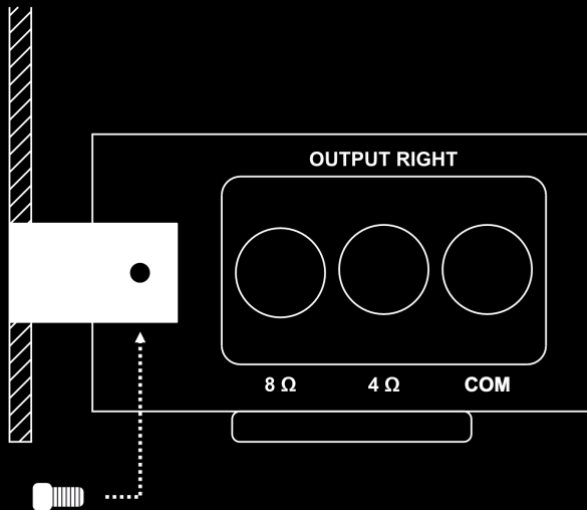
1. Ensure that all inputs and outputs are connected while the TP101 A30 is turned off or disconnected from the mains.
2. Connect the power cord to the TP101 A30
3. Turn on the product using the power switch located on the front panel.
4. Adjust volume by the central turning volume knob.
5. Switch input by turning the input knob.
6. To mute either speakers or headphones, use the relevant buttons.

PROTECTIVE GLASS COVER INSTALLATION

The protective glass cover prevents direct contact with hot vacuum tubes, reducing the risk of accidental burns while allowing a clear view of the tubes in operation.

Place the glass cover over the amplifier so that the small metal brackets on the cover rest against the amplifier's back panel. For secure mounting, use the supplied screws. Insert the screws through the metal brackets and tighten them into the threaded holes on the back panel (See the picture below).

Warning: Once the glass cover is installed, the amplifier must not be carried, lifted, or moved.



CAUTION!

The Waste Electrical and Electronic Equipment Directive Regulation of the European Union 2002 / 96 / EC governs the issue of separate waste collection.

This device may not be disposed of in unsorted municipal waste. Devolve the appliance into a collection centre for recycling and disposal of electrical and electronic equipment waste. Correct disposal of waste does not cause negative impacts on the environment and human health. You will thus contribute to the protection of the environment.

EUROPEAN COMMUNITY DIRECTIVES

This product is designed and manufactured to comply with existing laws of the European Community. This product is certified by a testing laboratory and bears the CE mark.

GUARANTEE CONDITIONS

Your CANOR TP101 A30 integrated tube amplifier is guaranteed against any defect in materials and workmanship for 24 months from the date of purchase except for audio vacuum tubes that are covered by warranty for three months.

The warranty only applies if an original proof of purchase and acknowledged certificate of warranty can be furnished. The warranty covers defects in materials and labour but does not cover misuse, unauthorized modifications, and external causes such as acts of nature.

OUTPUT TUBE BIAS ADJUSTMENT PROCEDURE

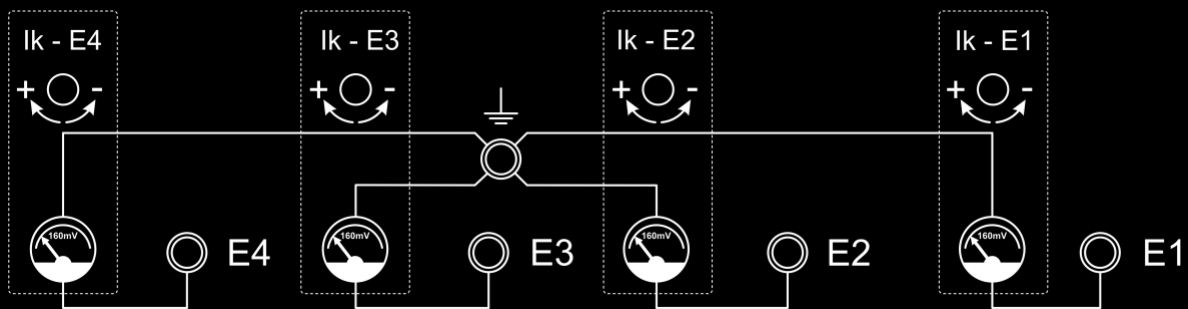
The bias is factory-set for the supplied matched quad of EL34 output tubes, and no bias adjustment is required when using the tubes provided with the amplifier.

After replacing the set of EL34 output tubes, it is necessary to adjust the amplifier bias, i.e. the DC operating point of the output stage. For the bias adjustment, you will need a voltmeter and a flat-head screwdriver.

Before you start the output tube bias adjustment procedure, make sure that the new set of tubes is correctly installed in their designated TP101 A30 tube sockets.

E1 – EL34 Tube 1
E2 – EL34 Tube 2
E3 – EL34 Tube 3
E4 – EL34 Tube 4

1. Carefully turn the amplifier upside down. Ensure that the unit's weight is not resting on the tubes. Support the amplifier securely in a stable position.
2. Connect the amplifier to the mains power supply and switch it on using the front panel power switch.
3. Using the voltmeter, measure the voltage between the GND and E1 test points.
4. With a flat-head screwdriver, adjust the voltage to **160 mV** using the Ik – E1 adjustment trimmer.
5. Repeat the same procedure to set the bias for the remaining output tubes at E2, E3 and E4.
6. After completing the adjustment, switch the amplifier off and disconnect it from the mains.
7. The bias adjustment procedure is now complete.



SPECIFICATIONS

Stereo Output Power	2 x 35 W / 4, 8 Ω (1 %)
Headphone Output Power	2 W / 30 Ω (< 1 %) 4 W / 300 Ω (< 1 %)
Gain	30 dB (at 4 Ω) 33 dB (at 8 Ω)
Input Sensitivity	380 mV
Frequency Range	18 – 55 000 Hz - 0.3 dB
Damping factor	6.5 / 4 Ω load 7 / 8 Ω load
Input Impedance	30 k Ω
Analog Inputs	5 x RCA pair
Analog Output	1 x RCA pair (Fix Out)
Headphone Output	1 x 6.3 mm jack
Total Harmonic Distortion	< 0.025 % / 8 Ω (1 kHz, 1 W) < 0.1 % / 8 Ω (1 kHz, 5 W)
Signal-to-noise ratio	> 96 dB
Tube Complement	4 x ECC81, 4 x EL34
Power	230 V, 50 – 60 Hz, 290 VA
Dimensions (W x H x D)	450 x 185 x 390 mm
Weight (Net)	23 kg
Weight (gross)	35 kg
Glass Cover Weight	5 kg



CANOR

www.canor-audio.com