

Thank You

Welcome

Firstly, thank you for purchasing your ISOL-8 PowerLine Ultra, we value your custom.

We strive to design and build world class products that stand the test of time.

By reading this manual you can gain clear understanding of its operation and learn to care for it correctly. In turn, it will reward you with a lifetime of outstanding performance.

To find out more about the importance of power supply in high resolution systems, and to view our full range of mains distribution and power conditioning solutions please visit our website:

www.isol-8.co.uk

Specification (subject to change)

Size: 400*88*83 (W*D*H mm 4 way)
540*110*100 (packaged)
Weight: 2.3 Kg
Voltage: 200-260VAC
Current: 10A maximum

Returns

Should it be necessary for your PowerLine to be serviced, please send it in the original packaging to your dealer. If this is not possible please contact us to obtain a Return Authorisation Number. Returns without this number will not be accepted. If it is not returned to us in its original packaging, ISOL-8 reserve the right to make a nominal charge for packaging by return.



Disposal and Recycling

At the end of the units working life it must be disposed of correctly. It is made to the highest standards with materials which can be recycled wherever possible. Do not dispose to landfill, contact your dealer or ISOL-8 for information regarding return for correct disposal.

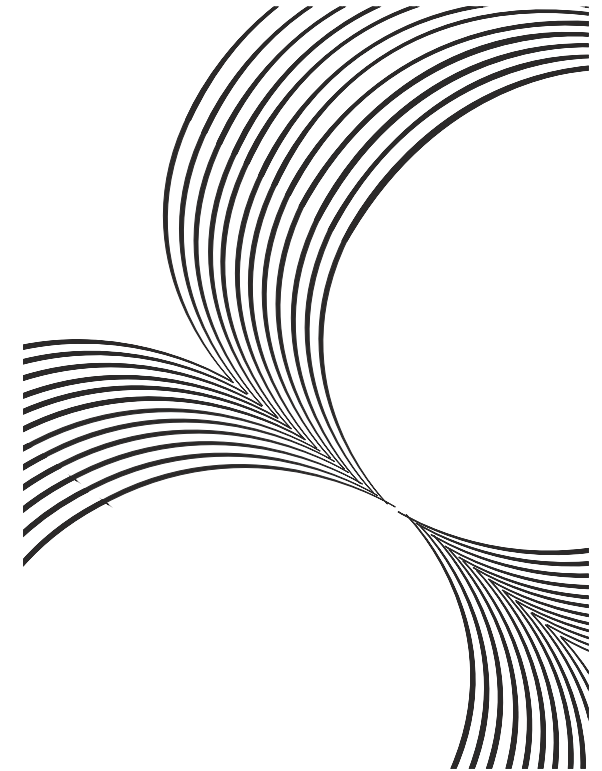
Information given in this document is correct at the time of printing. Our policy of continuous development means any changes might not be indicated in the specification.

Isol-8 Teknologies Ltd
PO Box 56402
London SE3 7WQ
fax: +44 (0) 20 8856 0616
email: info@isol-8.co.uk
Please visit our web site: www.isol-8.co.uk

© Isol-8 Teknologies 2010

ISOL - 8

Isolate, *Ī SŌ-lāt*, v.t. to render
free from external influence



PowerLine Ultra

User Manual

Unpacking

Be careful when unpacking your ISOL-8 PowerLine. Store the packaging safely for future use. It is the ideal method of protecting it from damage during transport.

Environment

Do not place near sources of heat such as radiators or in direct sunlight. Avoid abrasive surfaces as they may damage the finish. A flat even surface with good ventilation is best.

WARNING! Do not place the PowerLine near liquids, or place liquid-filled containers near the unit.

If liquid does come into contact with the unit there is serious potential for an electric shock and / or fire hazard. Immediately pull out the mains plug from the wall socket.

Contact your dealer to arrange an inspection before further use.

Connections

Locate the PowerLine as close to a wall outlet as possible. We recommend using high quality power cables to make the connections to and from your PowerLine.

ISOL-8 IsoLink cables are designed specifically to complement our products and are ideal for this purpose.

Cables using woven, unscreened construction may interact with the on board filter and degrade performance.

Avoid adapters and extension cables and keep overall cable lengths as short as is practical for best results.

The PowerLine Ultra has dedicated, high performance filters for each connected equipment type. Make sure you connect each system component to the appropriate labelled outlet:

Outlet “**HIGH CURRENT**” is specifically for integrated and power amplifiers, receivers, video projectors, subwoofers, media servers or any other product that may require heavy continuous or transient power.

This outlet is served by a “direct connection” filter design which avoids any current restriction.

Outlets “**SOURCE 1**”, “**SOURCE 2**” and “**SOURCE 3**” are for medium to low power source components such as pre amplifiers, optical disc players, DACs, tuners, phono stages or turntables.

A high performance “Transmodal” filter ensures minimum transmitted noise. Do not use these outlets for high power loads.

It is good practice to make all connections to your PowerLine before applying power.

Operation

The maximum total load connected to the unit must not exceed 10A.

A 6.3A T (time delay) fuse protects the SOURCE outlets. If the outlets do not work, check that the fuse in the IEC inlet is intact and replace with the same type and rating if necessary.

WARNING! Failure to replace the fuse with the same type and rating will invalidate the warranty and may result in an electric shock and / or fire hazard.

The PowerLine Ultra contains devices that protect the connected equipment against mains power surges and high voltage spikes. In very rare cases an unusually severe event can cause the unit to blow fuses.

If the fuse repeatedly fails, do not use the unit and contact your ISOL-8 dealer for service.

Your PowerLine should not need servicing during normal operation. There are no user serviceable parts inside. Do not open or attempt to repair the unit.

If you are in any doubt about any aspect of installation or operation, please consult your dealer, a qualified electrician or contact ISOL-8 directly for advice.

Cleaning

Dust the unit regularly with a soft cloth or soft brush. For more stubborn marks use a slightly damp cloth with a very small amount of mild detergent such as washing up liquid.

Do not use a wet cloth. Other cleaning or polishing agents should not be used. Never use abrasives or alcohol based agents, they will harm the surface finish.

Do not allow the unit to become wet when cleaning.